

# AKIRA

makes life better

---

## Air Conditioner Service Manual



Большая библиотека технической документации

<https://splitsystema48.ru/instrukcii-po-ekspluatacii-kondicionerov.html>

каталоги, инструкции, сервисные мануалы, схемы.

# MODEL: AC-W19CG

---

## CONTENTS

TECHNICAL SPECIFICATION.....	4
TROUBLE SHOOTING GUIDE.....	5
EXPLODED VIEW.....	6
PARTLIST .....	7
CIRCUIT DIAGRAM .....	8

## TECHNICAL SPECIFICATION

MODEL	AC-W19CG
FUNCTION	Mechanic Control Cool Only Type
COOLING CAPACITY (W)	4600
POWER SUPPLY	220-230V~ 50Hz
POWER INPUT(W)	2370
REFRIGERANT	R22
NOISE (dB(A)) (INDOOR/OUTDOOR)	56 63.5
CLIMATE TYPE	T1
DIMENSION (cm)	W X H X D 43X66X77
WEIGHT (Kg)	65






\* If there is any change, the correct parameter is on the nameplate of the air-conditioner.

\* Temperature range of working environment: Cooling type: 18-43 °C

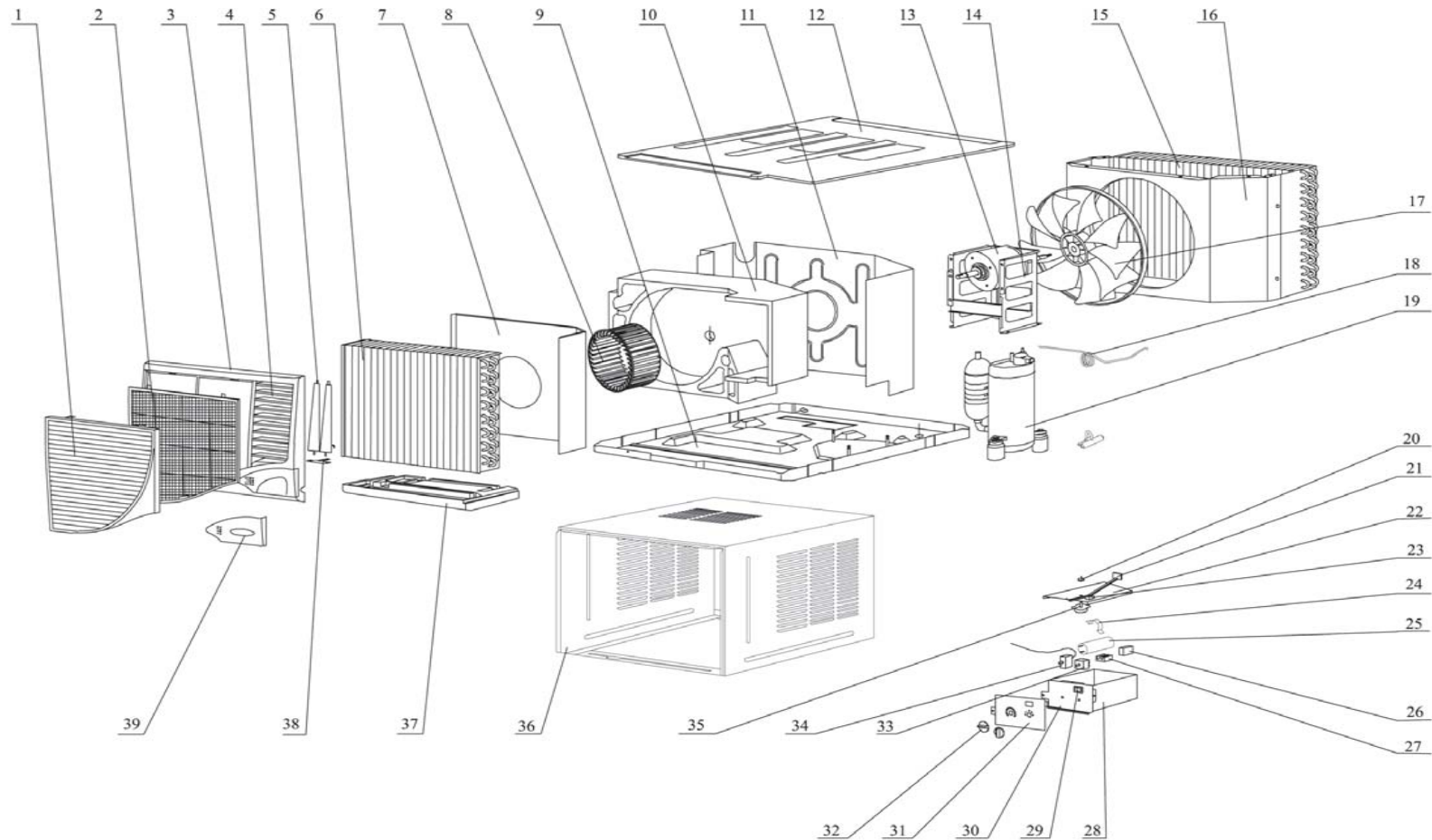
Note: test condition of function power input:

	Indoor side DB/WB (°C)	Outdoor side DB/WB (°C)
MAXIMUM COOLING	32/23	43/26
MINIMUM COOLING	21/15	21/-

## TROUBLE SHOOTING GUIDE

Fault phenomenon	Trouble-shooting
<p>Air conditioner dose not operate at all.</p> 	<ul style="list-style-type: none"> <li>* Is power fail?</li> <li>* Is plug out?</li> <li>* Is power fuse or switch off?</li> <li>* Is voltage higher than 244V or lower than 207V?</li> <li>* Is SET TIME suitable?</li> </ul>
<p>Cool efficiency is not good.</p> 	<ul style="list-style-type: none"> <li>* Is air inlet or outlet locking?</li> <li>* Is there any other heat source in room?</li> <li>* Are air filters dirty very much?</li> <li>* Is indoor fan speed set at LOW?</li> <li>* Is SET TEMP. suitable?</li> </ul>
<p>Wireless remote controller is not available.</p> 	<ul style="list-style-type: none"> <li>* If disturbed abnormally or operation modes changed too frequently, sometimes the electric controller would lose function. Please plug out and plug in again, it maybe OK.</li> <li>* Check batteries of wireless remote controller, if volt-age is little, change batteries.</li> </ul>
<p>Foggy air flows out.</p> 	<ul style="list-style-type: none"> <li>* At COOL or DRY mode operation, sometimes there is foggy air flowing out of indoor unit, this is because that room humid air has been cooling rapid.</li> </ul>
<p>The air conditioner operation is noisy.</p> 	<ul style="list-style-type: none"> <li>* For a noise that sounds like water flowing: This is the sound of freon flowing inside the air conditioner unit.</li> <li>* For a noise that sound like a shower: This is the sound of the dehumidifying water being processed inside the air conditioner unit.</li> </ul>
<p>It seems that condensation is leaking from air conditioner</p>	<ul style="list-style-type: none"> <li>* Condensation occurs when the airflow from the air conditioner cools the warm room air.</li> </ul>
<p>Air conditioner dose not operate for about 3 ninutes when restart.</p>	<ul style="list-style-type: none"> <li>* This is to protect the mechanism.</li> <li>* Wait about three minutes and operation will begin.</li> </ul>
<p>Remote control display is faint, or no display at all.</p>	<ul style="list-style-type: none"> <li>* Are the batteries depleted?</li> <li>* Are the batteries inserted in the opposite(+) and (-) directions?</li> </ul>

## EXPLODED VIEW

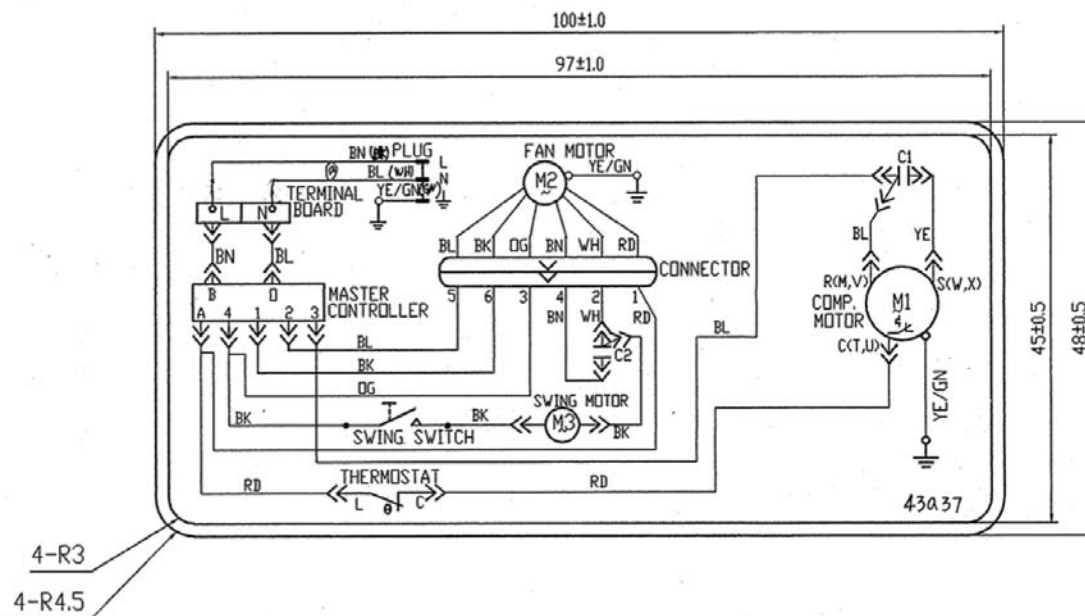


## PART LIST

No.	Part name	Part number	Qty
1	Front panel	20001521	1
2	Filter	11121520	1
3	Case of front panel	20001525	1
4	Guide Louver	10511507	12
5	Swing air guider	11511520	2
6	Evaporator	01001401	1
7	Insulation plate of housing	01231527	1
8	Centrifugal fan	10311360	1
9	Chassis ass'y	01201521	1
10	Propeller housing	12101520	1
11	Front insulation plate	01231530	1
12	Cover plate	01251521	1
13	Motor CJ165A	15011020	1
14	Motor Supporter	01701522	1
15	Condenser	01101401	1
16	Rear insulation plate	01231529	1
17	Axial fan	10331520	1
18	Capillary ass'y	03001401	1
19	Compressor SHY33MC4-U	00100141	1
20	Crank	11561520	1
21	Fresh air door	11581520	1
22	Cover of electric box	01411012	1
23	Support of air door	26151520	1
24	Capacitor clamp	02141006	1
25	Compressor capacitor CBB65 50uF/440V	33000001	1
26	Fan capacitor	33010009	1
27	Terminal board 2-5	42011106	1
28	Electric box	01411009	1
29	Swing switch	45020104	1
30	Front plate of electric box	01411013	1
31	Mask	20161313	1
32	Knob	45031125	2
33	Main switch	45010308	1
34	Thermostat	45040010	1
35	Swing motor	15210203	1
36	Cabinet	01431006	1
37	Drain pan	12411520	1
38	Swing Linkage	10581004	1
39	Main front panel	20001522	1
40	Power cord	40020463	1

## CIRCUIT DIAGRAM

These circuit diagrams are subject to change without notice. Please refer to the ones stuck on the machines.







# АКТРА

Большая библиотека технической документации

<https://splitsystema48.ru/instrukcii-po-ekspluatcii-kondicionerov.html>

каталоги, инструкции, сервисные мануалы, схемы.